



BOROUGH OF ELMER 2024 TRASH & RECYCLING CALENDAR



RESIDENTIAL, BUSINESS, INSTITUTIONAL
RECYCLING DAYS ARE CIRCLED • EVERY OTHER FRIDAY
TRASH COLLECTION EVERY FRIDAY

The state **requires** that municipalities recycle at least 60% of their trash stream. Your cooperation in separating **all** recyclables for pickup on recycling days is required for Elmer to meet this goal.
YOUR COOPERATION WILL HELP AVOID A PER-BAG-FEE FOR TRASH.

ITEMS WILL BE PICKED UP AT YOUR CURB AS FOLLOWS:

TRASH, GARBAGE, BULKY NON-RECYCLABLES
 EVERY FRIDAY; pickup may be early morning so put containers out the night before but no more than 24 hours prior. Includes **BULKY ITEMS** like furniture, carpets, mattresses; NO household cleanouts; *NO metal/white goods*. Remove empty containers within 24 hours.

COMMINGLED RECYCLABLES
 EVERY OTHER FRIDAY place into RECYCLING CONTAINERS; *DO NOT USE plastic bags for recyclables*; see insert for detailed zero-sort recycling guide.

PAPER & CARDBOARD Newspaper, magazines, catalogs, junk mail, computer paper, cereal box-type cardboard and corrugated cardboard; *NO pizza, food contaminated or wax coated cardboard. No shredded paper, place it in trash.*

GLASS Rinse and remove metal rings; *No blue or plate glass.*

TIN CANS (BI-METAL) & ALUMINUM CANS Rinse cans; *No pet food or other aluminum cans with Teflon-like coatings.*

PLASTIC CONTAINERS that have a #1 and #2 only. Margarine, yogurt and plastic take-out containers are *NO LONGER* recyclable. **Plastic lids must be removed and put in trash.** *NO plastic contaminated with petroleum products like oil, anti-freeze, or gasoline.*

VEGETATIVE MATERIAL
CHRISTMAS TREES JANUARY 2 & 9; NO metal, tinsel, lights

BRUSH/BRANCHES APRIL 18 & OCTOBER 17 for curbside chipping; place sticks & branches with diameter less than 5 inches with thickest end to curb; *NO roots with dirt*. Anything larger should be tied and bundled in 3 foot lengths and placed with regular trash. Yard waste may be placed curbside on trash days but **MUST** be separated from regular trash.

LEAVES ONE COLLECTION will be scheduled; the date will be posted in the Elmer Times in November; leaves must be in trash cans or biodegradable bags; *NO LEAVES permitted in regular trash.*

NO CURBSIDE PICKUP FOR ELECTRONICS AND WHITEGOODS/APPLIANCES

All consumer electronics and small household appliances such as computers, TVs, laptops, monitors, DVD players, toasters (anything with a cord) should be taken for recycling to the Salem County Waste facility on 36 McKillip Rd. in Alloway on Wednesdays or Saturdays 8:00am to 3:00pm; (856) 935-7900.

DO NOT PLACE ANY PLASTIC BAGS IN YOUR RECYCLING. Use your blue recycling container or paper bags for your items. Download the Recycle Coach App for additional recycling information. Free recycling containers may be picked up at the Borough Hall or by contacting Recycling Coordinator Cyndi Nolan (856) 305-0345.

LOOK FOR ANY CHANGES THAT MIGHT OCCUR DURING THE YEAR ON THE FRONT PAGE OF THE ELMER TIMES.

△ = Alternate Recycling Pickup ○ = Normal Recycling Pickup Days ◇ = Branch Pickup † = Christmas Tree Pickup Days
 □ = Alternate Trash Pickup ○ = Holiday Could Effect Trash/Recycling Collection

| January | February | March | April | May | June |
|--|--|---|--|--|--|
| S M T W T F S 1 † 3 4 (5) 6 7 8 † 10 11 12 13 14 15 16 17 18 (19) 20 21 22 23 24 25 26 27 28 29 30 31 | S M T W T F S 1 (2) 3 4 5 6 7 8 9 10 11 12 13 14 15 (16) 17 18 19 20 21 22 23 24 25 26 27 28 29 | S M T W T F S 1 2 3 4 5 6 7 8 9 10 11 12 13 14 (15) 16 17 18 19 20 21 22 23 24 25 26 27 28 (29) 30 31 | S M T W T F S 1 2 3 4 5 6 7 8 9 10 11 (12) 13 14 15 16 17 (18) 19 20 21 22 23 24 25 (26) 27 28 29 30 | S M T W T F S 1 2 3 4 5 6 7 8 9 (10) 11 12 13 14 15 16 17 18 19 20 21 22 23 (24) 25 26 27 28 29 30 31 | S M T W T F S 1 2 3 4 5 6 (7) 8 9 10 11 12 13 14 15 16 17 18 19 20 (21) 22 23 24 25 26 27 28 29 30 |
| July | August | September | October | November | December |
| S M T W T F S 1 2 3 4 (5) 6 7 8 9 10 11 12 13 14 15 16 17 18 (19) 20 21 22 23 24 25 26 27 28 29 30 31 | S M T W T F S 1 (2) 3 4 5 6 7 8 9 10 11 12 13 14 15 (16) 17 18 19 20 21 22 23 24 25 26 27 28 29 (30) 31 | S M T W T F S 1 2 3 4 5 6 7 8 9 10 11 12 (13) 14 15 16 17 18 19 20 21 22 23 24 25 26 (27) 28 29 30 | S M T W T F S 1 2 3 4 5 6 7 8 9 10 (11) 12 13 14 15 16 (17) 18 19 20 21 22 23 24 (25) 26 27 28 29 30 31 | S M T W T F S 1 2 3 4 5 6 7 (8) 9 10 11 12 13 14 15 16 17 18 19 20 21 (22) 23 24 25 26 27 28 29 30 | S M T W T F S 1 2 3 4 5 (6) 7 8 9 10 11 12 13 14 15 16 17 18 19 (20) 21 22 23 24 25 26 27 28 29 30 31 |

Trash and/or Recycling Complaints Call: Green Guys Recycling Solutions LLC 1-856-468-2229

BOROUGH OF ELMER

120 S. Main Street
P.O. Box 882
Elmer, New Jersey 08318

NEW IMPORTANT INFORMATION—PLEASE READ PICK-UP DAYS TRASH AND RECYCLING RULES FOR 2024

- Trash Day: **EVERY FRIDAY** (1st pickup Jan. 5)
- Recycling Day: **EVERY OTHER FRIDAY** (1st pick-up Jan. 5)
- Holidays may move collection to the following day; changes and SPECIAL PICKUP DAYS (Leaves, Chipping, etc.) will be posted on the front page of the Elmer Times and on the RECYCLE COACH app.
- SALEM COUNTY SOLID WASTE FACILITY sponsors 4 Household Hazardous Waste Days and 2 Shredding Events every year; call (856) 935-7900 or visit their website for more information.

RESTRICTIONS

- Plastic bags ARE NOT acceptable containers for recycling; **FREE large blue recycling containers are available at Borough Hall**; call (856) 305-0345 or (856) 358-4010 ext. 110 to arrange pickup.
- ELECTRONICS AND WHITE GOODS WILL NOT BE PICKED UP CURBSIDE; residents must take all household electronics to the Salem County Solid Waste Facility for recycling, Wednesday & Saturdays, 8:00am - 3:00pm.
- THE DEPT. OF ENVIRONMENTAL PROTECTION PROHIBITS LEAVES IN THE LANDFILL. The date of leaf collection will be posted in the Elmer Times in November. Yard waste may be placed curbside on trash days in a separate container from regular trash.

CONTACTS

Trash/Recycling Collection Company
Green Guys Recycling Solutions LLC
1014 Tanyard Road, Deptford Twp., NJ 08096

Pickup Complaints:
(856) 468-2229

Elmer Borough Hall
120 S. Main St., Elmer
(856) 358-4010
www.elmerboroughnj.com

Trash/Recycling Committee
Council Member Cyndi Nolan, Coordinator
(856) 305-0345
Council Committee Members
Cyndi Nolan, Lynda Davis, James Zee

Salem County Solid Waste Facility
36 McKillip Rd., Alloway, NJ 08001
Wednesdays & Saturdays, 8:00 am - 3:00pm
(856) 935-7900
<http://scianj.com/solid-waste/>

Clean Communities Coordinator
Contact Councilwoman Cyndi Nolan
(856) 305-0345

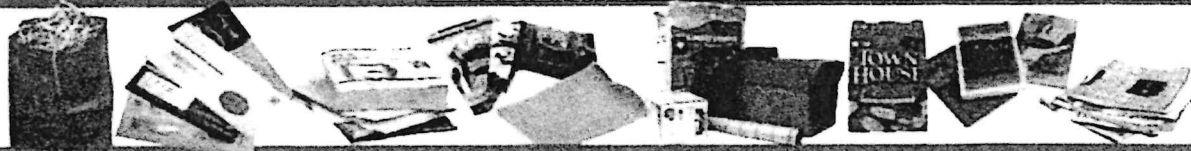


Recycle These Items



PAPER, CARDBOARD and JUNK MAIL TOO!

Includes: Newspaper, phone books, junk mail, magazines, catalogs, paperback books, brown grocery bags, gray paperboard (such as: cereal boxes & tissue boxes), school and office paper, **NO shredded paper.**



ALUMINUM, STEEL & TIN CANS;

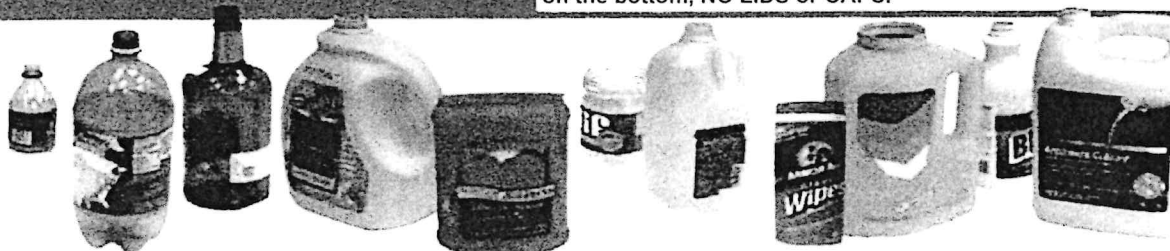
GLASS BOTTLES & JARS



Empty non-hazardous aerosols

PLASTIC BOTTLES & JARS

Only Plastic bottles and jars with a number or on the bottom, **NO LIDS or CAPS.**



DO NOT RECYCLE



- NO Hardback Books
- NO Foil-coated or food contaminated boxes (Pizza boxes)
- NO Plastic pails, plastic toys, yogurt containers, tubs, food containers
- NO Mugs, glasses, vases, bulbs, bakeware, dishes, window glass
- NO Motor oil, lubricants, paint, pesticide containers
- NO Plastic bags, Styrofoam lids, caps

HOW TO RECYCLE!

PAPER

No need to separate or place in brown bags. All recyclables can be co-mingled

PUT SHREDDED PAPER IN A BAG AND PLACE IT IN THE TRASH

CARDBOARD

Please flatten big boxes
JUNK MAIL

Window envelopes are OK
Remove product samples and plastic cards before recycling junk mail

NEVER PUT IN PLASTIC BAGS

BOTTLES & CANS

Rinse clean
Labels can stay on

Throw away caps & lids

Mix bottles & cans in your bucket

Download the **FREE RECYCLE COACH APP** and your Elmer Calendar will be available on your cell phone. Holiday collection changes, leaf pickup, shredding events and Household Hazardous Waste collection events are updated as they are scheduled. Never miss a County event again. The app also has a "What goes where?" search tool.

Electronics (computers, televisions, etc.) Fluorescent lamps/bulbs WILL NOT be collected at curbside and must be taken to the Salem County Improvement Authority on Wednesday or Saturday from 8 am to 3 pm.

Borough of Elmer

120 S. Main Street, P.O. Box 882
Elmer, New Jersey 08318

MAYOR
Joseph P. Stemberger (856) 358-2509
BOROUGH CLERK
Sarah D. Walker (856) 358-4010
CHIEF FINANCIAL OFFICER
Cynthia A. Strang (856) 521-0530

TELEPHONE (856) 358-4010
FAX (856) 358-8019
www.elmerboroughnj.com

BOROUGH COUNCIL
Lynda Davis (609) 420-4653
Bruce Foster (856) 777-3375
Cynthia L. Nolan (856) 305-0345
Steven A. Schalick (856) 498-6850
Lewis M. Schneider (856) 358-0388
James W. Zee III (609) 774-8628

December 2023

Dear Elmer Residents and Business Owners,

In accordance with our NJDEP Tier B Municipal Storm Water General Permit, the Borough has adopted various Ordinances to be in compliance with the Storm Water Program. As part of our Local Public Education Program, the purpose of this letter is to highlight the requirements and environmental benefits of these Ordinances. Listed below are some of the areas that are covered:

Pet Waste: This Ordinance requires pet owners to pick up and properly dispose of pet waste dropped on public or other people's property. It prevents fecal contamination from impacting waterways.

Litter: This Ordinance states that it is unlawful to throw, drop, discard or otherwise place litter of any nature upon any public or private property, other than in a litter receptacle. The purpose of the Ordinance is to prevent unsightly and unsanitary conditions and prevent litter from impacting waterways.

Improper Disposal of Waste: This Ordinance states that it is illegal to dispose of waste in any place not specifically designated for the purpose of solid waste storage or disposal. The purpose of the Ordinance is to prevent unsanitary condition and groundwater pollution.

Wildlife Feeding: Feeding of water fowl in the

Borough of Elmer is prohibited by Ordinance. The Borough enacted the Ordinance as a method to reduce water fowl population in response to health concerns regarding bacteria which is harmful to human and fish populations.


Yard Waste: Yard waste is regulated via Ordinances which establish the current zone collection system and the methods of collecting leaves, brush, and other yard waste. The purpose of these Ordinances is to keep leaves and grass out of the storm sewer system.

Illicit Connections: This Ordinance makes it unlawful to connect any pipe or device to the municipal storm sewer system that is intended to discard, spill or dump any material other than storm water runoff or groundwater (sump pumps) into the system. The purpose of this Ordinance is to prevent pollution and contamination of waterways which receive discharge from our storm sewers.

The transport of pollutants into local water bodies can result in the destruction of fish, wildlife and habitats; threats to public health; and the loss of recreational and aesthetic value. The above Ordinances have been adopted to protect our environment and to keep pollutants that are commonly conveyed by storm water from adversely impacting our waterways and groundwater supplies. Thank you for your continued cooperation with our environmental protection efforts.

We encourage all residents and businesses to stay connected and informed of all Borough Recycling activities by downloading the free **RECYCLE COACH** app on your mobile devices.

Sincerely,



Joseph P. Stemberger, Mayor